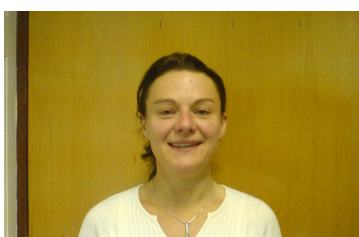




EMOTIONAL HEALTH IN PATIENTS WITH ADVANCED CANCER: A JOINT PROJECT BETWEEN THE UNIVERSITIES OF LIVERPOOL AND LANCASTER, SUPPORTED BY ST LUKE'S HOSPICE, SHEFFIELD



THE RESEARCH TEAM

Dr Claire Chandler (left)

Welcome to this second edition of the newsletter which is designed to keep everyone who is involved with the Emotional Health in Advanced Cancer study informed of what we are doing and where we are up to. 2008 has brought some changes to our group. We say congratulations and farewell to Dr Suzanne Edwards who has been successful in gaining a post with the 5 year NIHR programme at Liverpool. Suzanne worked very hard to ensure that all the systems were in place for the study during the early months.

In June we will be welcoming Claire Keogh to our team. Claire is currently finishing her PhD at the University of Maynooth in County Kildare, Ireland—we look forward to welcoming Claire to our team.

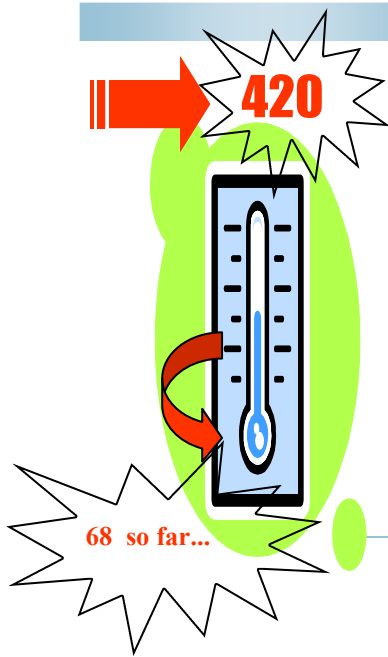
Sadly Tom Lynch our researcher based in Lancaster suffered a serious accident over Christmas and has been very unwell and is still off work—we all send him our very best wishes for a speedy recovery.

Inside this issue

Targets	2
The research	2
Research Progress	3
Research Partners	3
Recruitment Successes	4

Special points of interest

- Our Research Team
- In a nutshell...
- Website addresses
- Researcher Contact Details



TARGETS

We will be asking patients attending hospice day care units across the North West of England and Wales if they want to take part in our research.

We need **420** people to help us with this study.

If you want to help us reach this target then please ask one of your hospice nurses for some more information.

We need to interview 420 patients about how cancer affects them

What Are We Doing?

One of the studies we are currently working on is about emotional health in advanced cancer. We know that being ill can affect your mood and that sometimes people can get depressed. We want to learn more about why some people get depressed and what helps people feel better or worse.

Who will be taking part?

We will be talking to lots of different people with cancer. If you are attending your hospice day-care unit or complementary therapy clinic, you may be eligible to take part.

Ask your nurse for more details.

The research

The research is funded by the BIG Lottery. Patients who give their consent to take part will be interviewed and asked to complete three short questionnaires on three separate occasions. This is to see how things change over time.

In a nutshell...

THE STUDY INVOLVES MEETING WITH ONE OF OUR RESEARCHERS EITHER HERE OR AT YOUR HOME FOR A FIRST INTERVIEW, FOLLOWED BY 3 SHORT TELEPHONE INTERVIEWS

CECo

Cancer Experiences Collaborative is a partnership between the Universities of Liverpool, Manchester, Southampton, Lancaster and Nottingham to provide research in palliative and supportive care. On April 11th 2008 a conference was held at the University of Liverpool and hospices who are involved in the study were invited to attend to learn more about palliative and supportive care research.

Research Partners

We have been working closely with a number of hospices across the region. The staff and patients at these units have made us feel very welcome. Look at the column on the right for a list of all the hospices that have been helping us so far. If you see us in your hospice, please feel free to have a chat with us.

Patients have been directly involved with this study from the design of the initial research proposal and are key partners in the steering group for this research. We wish to thank Mrs. April Matthews, Ms. Sue Kernaghan and Mrs. Tina O'Connor who are involved in our project management and project advisory groups for all their help.

Current Research Partners

- **[St Luke's Hospice, Sheffield](http://www.stlukeshospice.org.uk/)**
<http://www.stlukeshospice.org.uk/>
 - **[St John's Hospice, Lancaster](http://www.sjhospice.org.uk/)**
<http://www.sjhospice.org.uk/>
 - **[Hospice of the Good Shepherd, Chester](http://www.hospiceofthegoodshepherd.com/)**
<http://www.hospiceofthegoodshepherd.com/>
 - **[Hospice of St Mary of Furness, Ulverston](http://www.stmaryshospice.org/)**
<http://www.stmaryshospice.org/>
 - **[St Luke's Hospice, Winsford](http://www.stlukeshospice.co.uk/)**
<http://www.stlukeshospice.co.uk/>
 - **[East Cheshire Hospice, Macclesfield](http://www.eastcheshirehospice.org.uk/)**
<http://www.eastcheshirehospice.org.uk/>
 - **[East Lancashire Hospice, Blackburn](http://www.eastlancashirehospice.co.uk/)**
<http://www.eastlancashirehospice.co.uk/>
 - **[St Catherine's Hospice, Preston](http://www.stcatherines.co.uk/)**
<http://www.stcatherines.co.uk/>
 - **[St Rocco's Hospice, Warrington](http://www.stroccos.org.uk/)**
<http://www.stroccos.org.uk/>
 - **[St Kentigern Hospice, St Asaph, Denbighshire](http://www.stkentighospice.org.uk/)**
<http://www.stkentighospice.org.uk/>
 - **[Nightingale House Hospice, Wrexham](http://nightingaleappeal.co.uk/)**
<http://nightingaleappeal.co.uk/>
- [University of Lancaster](http://www.lancs.ac.uk/fass/ihr/research/ioelc/)**
<http://www.lancs.ac.uk/fass/ihr/research/ioelc/>
- [University of Liverpool](http://www.liv.ac.uk/primarycare/)**
http://www.liv.ac.uk/primarycare

The University of Liverpool



Lancaster University



Recruitment Successes

With the help of our research partners, we have been recruiting patients to take part in this study since the beginning of October 2007. In just a few short months **sixty -eight** patients have helped us.

We still have a long way to go before we reach our target of 420, and we can't do it without your help. So a **VERY BIG THANK YOU** to all the hospice staff and patients who are making this research possible.

From all the research team,

Claire and Tom

University of Liverpool

APSCSG
Division of Primary Care
Whelan Building (2.02)
Brownlow Hill
Liverpool. L69 3GB

Phone: 0151 794 5598
Fax: 0151 794 5604
E-mail: claire.chandler@liverpool.ac.uk
claire.chandler@liverpool.ac.uk

Lancaster University

APSCSG
International Observatory on End of
Life Care
Institute for Health Research
Lancaster University LA1 4YT

Tel. 01524 592808
Fax. 01524 592401
Email: tlynch2@lancaster.ac.uk

